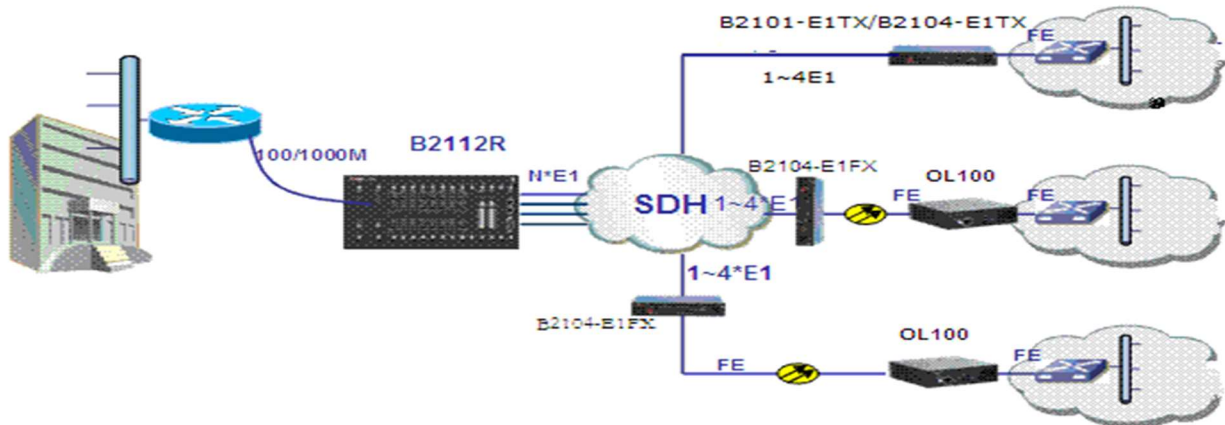
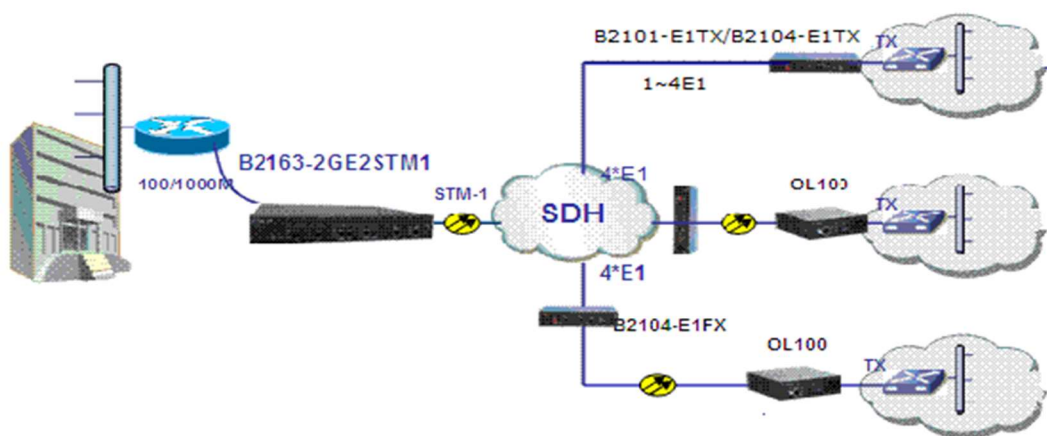


E1 Access



When end-user is near to SDH transmission equipment room, B2101-E1TX/B2104-E1TX can be used to provide 1 channel TX to 4E1 conversion, offering 4E1 aggregation with any combination over B2104-E1TX, 2~8M access bandwidth is available. Otherwise, OL100 MC and B2104-E1FX can be used in pair, convert the Ethernet into 1~4*E1 then access to transmission network.

In central server room, modular chassis B2112R can be installed, configured with LC-B2112R-2E1TX, 4*E1-TX line card as well as switching line card. The Ethernet signal from end-user is reverted and aggregated to 1 channel 100/1000M RJ45 or GE optical fiber signal, then connects to core switch or router in headquarter, realizing multi-E1 key account access.



Comparing to figure-1, the biggest difference is stand-alone type B2163-GESTM1 deployed in central server room, replacing chassis modular type B2112R. B2163-2GE2STM1 features 2 fractional STM-1 as well as 2 GE ports, offering 63 E1 to Ethernet aggregation. The STM-1 connects to SDH, aggregate remote 63E1 and convert to 1 channel 10/100/1000M Ethernet electrical signal.

This scenario does great simplify the cable connection between aggregation equipment and SDH in central server room. When E1 line of STM1 has good utilization, this application model has outstanding cost advantage as well.