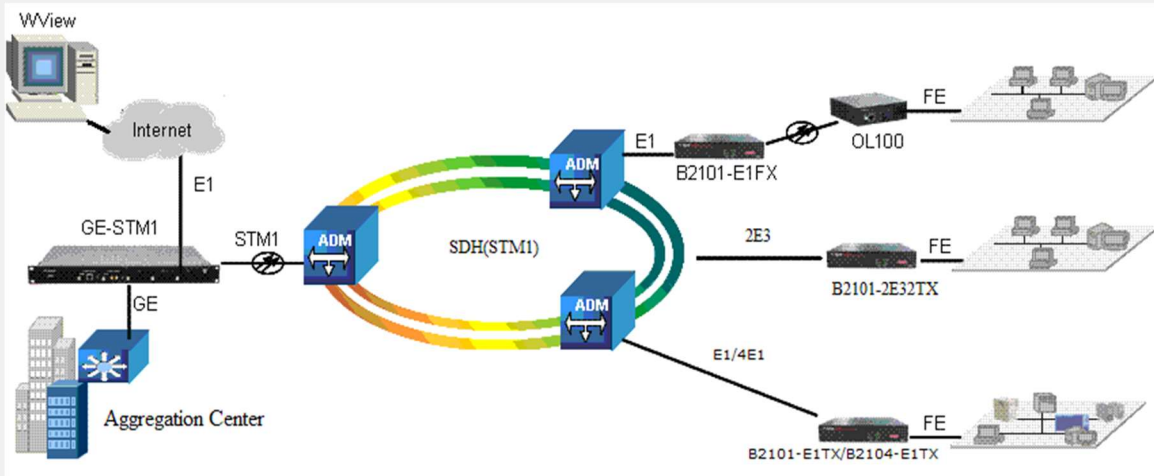
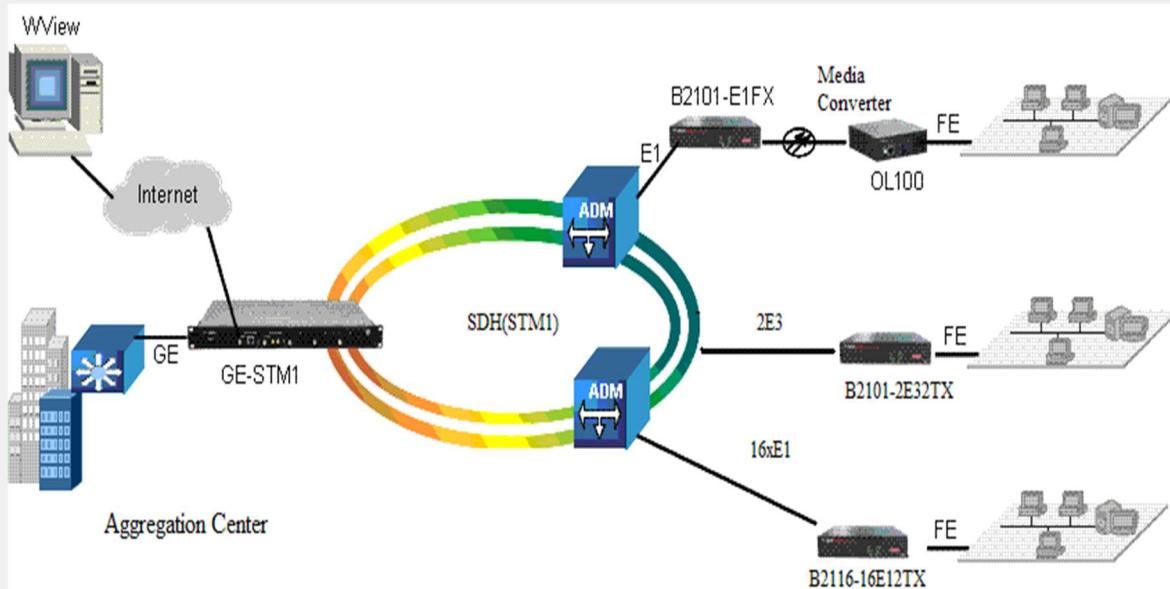


For GE-STM1 networking solution



In user's branch node, versatile interface converters can be used based on specific access requirements including B2101-E1TX, B2104-E1TX (or B2104-E1FX+OL100), B2101-2E32TX, etc., realizing E1/E3 service access. In aggregation center, GE-STM1 product can also be in-band managed via E1 channel or out-of-band network management port.



GE-STM1 product can be used in ring topology. In this way, GE-STM1 works as the central node of SDH STM-1 ring, offering 1-channel GE data uplink.