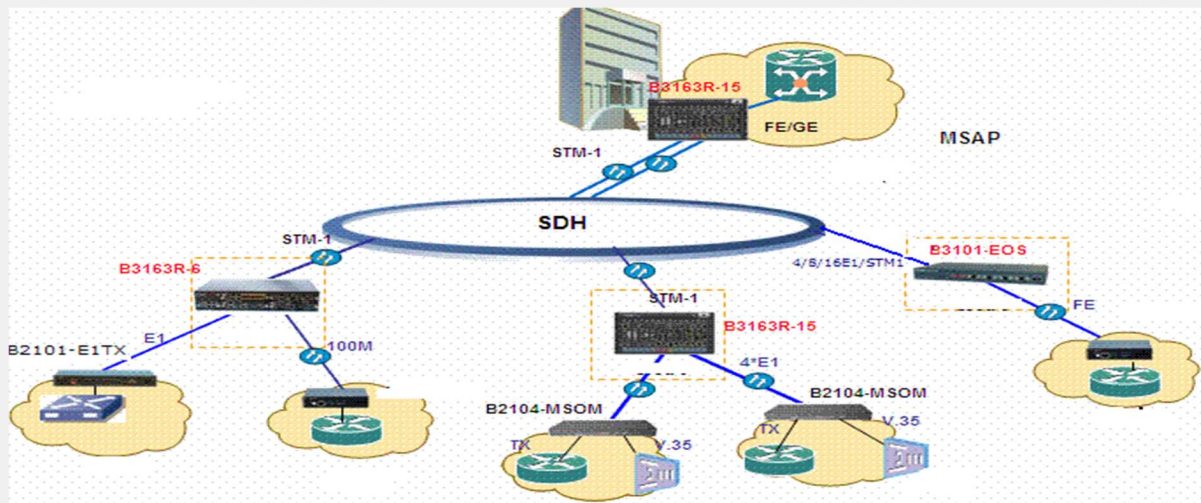


For MSAP integrated access



B3100 is integrated with SDH, PDH, media converter, interface converter, fiber-optic modem, Ethernet switching, EOS, etc. It adopts modular structure design, featuring versatile service interfaces, which combines with PDH low cost, easy deployment and SDH powerful function in terms of aggregation/scheduling /protection. This application module not only saves much space/2M cable, but also decreases the number of possible failure points, further greatly enhances the response speed when failure happened.

When the number of key account is great and they are centralized distributed, B3163 can be deployed in center as aggregation equipment. In edge server room, B3163, B3101-EOS can be used, offering fractional STM-1, aggregating the access traffic from all the customers in a certain area.